

BraceSense Usage Guide



BraceSense.com



Note: To successfully generate the report, please review the instructions carefully. We recommend performing a test run upon activation to ensure you can obtain the report as expected.

Step 1: Install the Battery

(A single CR2032 battery provides up to 2 months of continuous use.)



① Use a pry tool to open the device casing.



② Install the battery with the positive terminal facing outward.



③ fasten the back cover securely for water resistance.

Warning: It is critical to repeat the full procedure (all nine steps) after every battery change to guarantee the accuracy and integrity of your data.

Step 2: Use the WeChat Mini-Program Client

④ Scan the QR code to access the Mini-Program in Wechat APP.

Note: If WeChat's "Teen Mode" is enabled, you must apply for temporary access.



Wechat APP



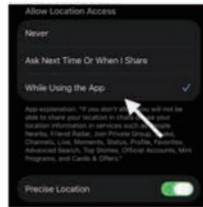
WeChat Mini-Program QR Code

⑤ Ensure your phone's Bluetooth is turned on.



⑥ Enable Location Services:

- In your phone's app permissions, find WeChat and grant location permission, selecting "Allow only while using the app".
- Some phones can not detect the device without location permission.



⑦ Click the "three dots" menu icon and allow the Mini-Program to use Bluetooth.



Please Note:

- Compatibility may vary by phone brand and model.
- If two WeChat apps are installed, only one may work for this purpose.
- If connection fails on your phone, try using a different phone.

⑧ Bring the device close to your phone. Click the black disk icon in the upper right corner of the Mini-Program to bind the device.

After binding, wait for about 10 seconds for the device to automatically synchronize.



⑨ Shake the sensor and wait for 10 seconds. Check the count in the central circle on the home screen. If a count is displayed, it confirms the device is operating normally.



Step 3: Install the Device (Two Mounting Options)

A: Pre-Installation: Mounted on the inner side of the brace after thermoplasti.



Notes: The high-temperature adhesive may detach. Avoid prolonged contact between the brace and heat sources like electric blankets or heating pads. If detachment occurs, use the spare patch for re-fixation.



B: Post-Installation: Riveted to the outer side of the brace.



Notes:

- Align the notch upward, with the logo side facing outward.
- Secure the device on the front of the abdomen.
- When applying, press firmly to expel air from the adhesive tape.

Step 4: Generate and Export the Monitoring Report

⑩ Keep the device close to you. In the Mini-Program home screen, select the start date.

(Optional: You may upload a photo of the brace being worn).



⑪ View and Export the Report.

✳️ Click the refresh button in the upper right corner of the home screen to synchronize data and obtain a complete report. Please ensure a stable mobile phone signal during this process.

If a complete report is not generated, this may be due to poor phone signal or other reasons. Please repeat the operations until a complete report is obtained.

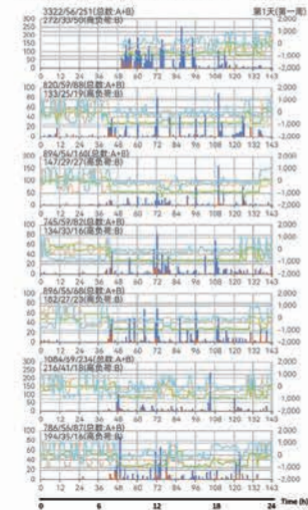
⑫ Share the Report via WeChat or print it to provide to your doctor or therapist for follow-up.



Three Sample Brace Record Reports (1 Week Example)

Red circles highlight daily periods without brace wear

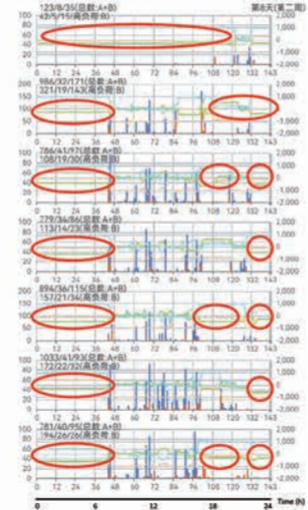
1/3: "Excellent all-day compliance"



Three Sample Brace Record Reports (1 Week Example)

Red circles highlight daily periods without brace wear

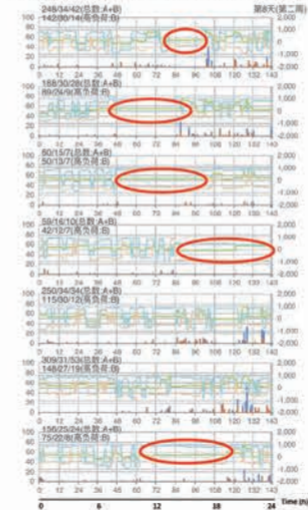
2/3: "Never worn at night"



Three Sample Brace Record Reports (1 Week Example)

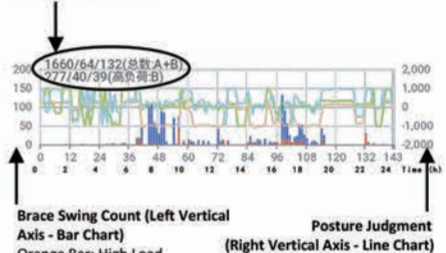
Red circles highlight daily periods without brace wear

3/3: "Night compliance good, day compliance poor"



Data Interpretation Examples:

- ① The brace swung a total of 1,660 times that day, of which 277 were high-intensity swings.
- ② Out of 144 ten-minute intervals in the day, the user had 64 intervals with continuous brace swinging.
- ③ The 10-minute period with the most brace swings (132 swings) was around 4:30 PM.



- Brace Swing Count (Left Vertical Axis - Bar Chart)
 Orange Bar: High Load
 Blue Bar: Low Load
- Posture Judgment (Right Vertical Axis - Line Chart)
- The count increases by 1 for each brace swing.
 - A single swing is not counted; continuous swinging of 2 times or more is counted.
 - Data is summarized every 10 minutes, resulting in 144 data points per day.

Thank you for choosing and using our BraceSense product!
 We strive to provide you with reliable and professional orthopedic brace monitoring solutions.

Product Specifications

Battery: CR2032 (2 Months Continuous Use)
 Fit for: Orthopedic Brace (Inner/Outer Mount)
 Model: BraceSense V3.5

TECHNICAL SUPPORT

Official Website: bracesense.com
 Authorized Partner Support: www.hd-01.com
 WeChat Mini Program: BraceSense Monitor